



A NONPROFIT CARE FARM WHERE PEOPLE, ANIMALS, AND THE EARTH WORK TOGETHER FOR MUTUAL HEALING.

2012 ANNUAL REPORT

FIVE YEARS AND GOING STRONG

a message from Chad Goldsmith, Board President



When Sanctuary One opened in March, 2008, it was a delicate seedling tended by a small group of visionaries who, despite all the naysayers who said it couldn't be done, never wavered in their belief in the Sanctuary's mission: to be a safe place for animals and a healing place for people while promoting environmental stewardship.

What a difference five years makes! The Sanctuary has quickly grown from a grassroots organization into a thriving nonprofit that received 1,067 gifts from 628 donors this past year. If you're one of those 628 people, thank you. We hope this report inspires you to continue to contribute. If you've never donated before, we hope this report will encourage you to get involved. No contribution is too small to make a difference. Some of our most loyal donors give just \$10 a month.

The key lesson we've learned over the past five years is that care farming utilizes three elements—people, animals, and the earth—that add up to be more than the sum of their parts. When one is healed, all are healed, because we're all interconnected. That's the holistic "One" in "Sanctuary One."

Looking ahead to 2013, the board of directors has established four strategic focus areas for the year and beyond:

- » Further establish the Sanctuary as the premier source for care farming education in the United States.
- » Continue to excel at animal rescue and adoption.
- » Increase national recognition and support.
- » Improve long-term financial sustainability by diversifying income.

We feel that by focusing on these four core strategic goals we will help ensure the long term success of the organization and allow Sanctuary One to continue leading the way in this country for the care farm concept.

Thank you for taking the time to read our Annual Report. If you have any questions or comments, please call the Sanctuary office at 541.899.8627 or email info@SanctuaryOne.org.

Chad

LEADERSHIP TEAM

The Sanctuary's Board of Directors are volunteers. They jointly direct the making and administration of policy, provide strategic leadership, oversee fundraising efforts, and evaluate the executive director's job performance. They are:

- » Michael Bertholf, member-at-large. Michael is an attorney-at-law.
- » Chad Goldsmith, president. Chad works as a project manager and is a business owner.
- » Stephanie Roland, vice president. Stephanie is a professional fundraiser.
- » Michele Schaefer, secretary. Michele is a health care counselor.
- » Paula Sendar, member-at-large. Paula is a wine producer and an interior designer.
- » Lisa Shapiro, treasurer. Lisa owns and operates a food distribution business.

The Sanctuary's staff are paid professionals who manage the operational activities of the Sanctuary. They include:

- » Robert Casserly, MiM, executive director. Robert is the Sanctuary's chief administrator.
- » Sansa Collins, BA, animal care manager. Sansa's primary job is keeping the Sanctuary's animals healthy and happy.
- » Jerry Henning, caretaker. Jerry is a jack-of-all-trades with more than 50 years of farming experience.
- » Brian Kiese, program assistant. Brian is a computer expert and licensed contractor.
- » Della Merrill, MAT, general manager. Della manages the day-to-day activities at the Sanctuary.

our care farm's motto is

PEOPLE, ANIMALS, AND THE EARTH: BETTER TOGETHER.

♥ PEOPLE CARE

Working with animals and gardening at a care farm has been widely shown to be healthy exercise, lower blood pressure, ease depression and stress, and help lonely people establish therapeutic relationships. Three fundamental ingredients make care farming an affordable, natural, and effective way to improve a person's health: the connection with nature and animals, the connection with other friendly people, and the connection with meaningful work.

In 2012, we served more than 2,000 people of all ages who came out to participate in our care farm's service-learning activities, educational tours, healthful volunteer programs, and special projects.

The Sanctuary's volunteer and interns programs are thriving. 462 volunteers of all ages donated 3,997 hours of help in 2012. That's the most volunteer hours served at the Sanctuary in a single year. In addition, eight interns received a total of approximately 10,000 hours of experiential care farming education and work experience.



We are honored to provide military veterans with some well-deserved R&R. A group from the local VA Clinic visits the Sanctuary about once a month.

🐾 ANIMAL CARE

We continue to specialize in rescuing disabled, elderly, sick or injured, and other special-needs animals that we take in from animal shelters, humane societies, law-enforcement agencies, and veterinarians who call on us to help save an animal's life.

In 2012, the Sanctuary's capacity for rescuing farm animals and house pets increased to approximately 100 animals at a time. We took in 92 animals and resolved 107 medical and behavioral cases for the animals in our care.

Sometimes it takes years for us to find a good home for a rescued animal, sometimes just a couple of weeks. Whatever it takes, every animal we take in is welcome to live out his or her life at the Sanctuary if no one wants to adopt them. What's more, all adoptions come with a lifetime return guarantee to ensure they never become homeless again.



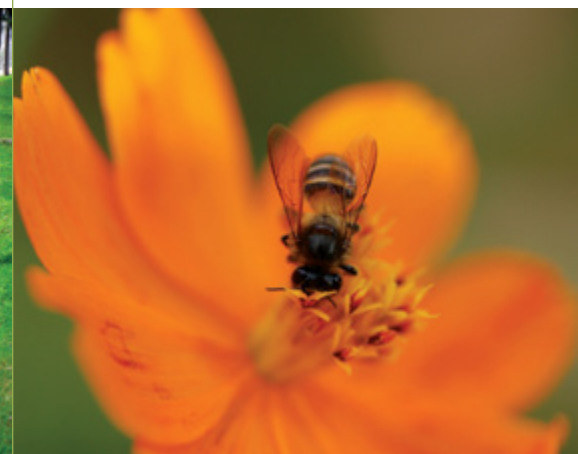
We adopted out 53 animals in 2012, including Calli, a horse rescued after an animal neglect investigation. Every adoption creates room for us to take in another endangered animal.

🌍 EARTH CARE

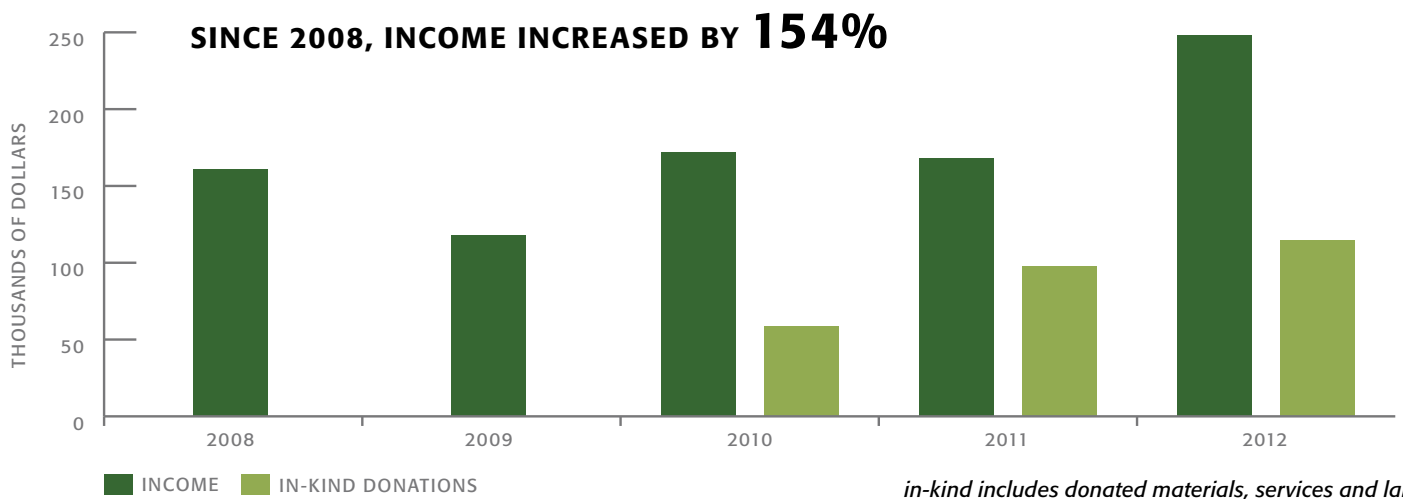
The Sanctuary's garden areas have expanded to cover 35,000 square feet. We make our own soil by composting. Most of the plants in the gardens were donated. We use drip irrigation wherever possible to conserve water, and we recently installed a cistern to harvest rain water. We never use chemical pesticides or fertilizers.

To date, we've planted 92 trees at the Sanctuary. Every tree we plant is a gift to the children and grandchildren who will follow in our foot-steps. The Sanctuary is 55 acres altogether, so we have the capacity to plant hundreds of more trees in the years to come.

We grow 14 acres of Timothy grass, clover, and barley for pasture. We also grow a variety of flowers, herbs, and vegetables, preserve 30 acres of biological diverse forestlands, and maintain a 250,000 gallon duck and goose pond.



Our new permaculture learning garden is a delightful mix of edible, beautiful, and bee-friendly plants.



1. STATEMENT OF FINANCIAL ACTIVITIES 1/2012 to 12/2012

Revenues

- » Contributions & Grants: \$180,789
- » Fundraising Events: \$40,825
- » Farm Income: \$27,245
- » Interest: \$36

Expenses

- » General Operating & Programs \$110,675
- » Payroll: \$82,661
- » Fundraising Events: \$12,031

Total Revenues \$248,895

Total Expenses: \$205,367

Net Income: \$43,528

2. STATEMENT OF FINANCIAL POSITION as of 12/31/2012

Current Assets

- » Checking: \$18,277
- » Emergency Fund: \$50,023
- » Petty Cash: \$200
- » Total Current Assets: \$68,500

Fixed Assets

- » Buildings \$31,570
- » Farm Equipment: \$22,133
- » Office Equipment: \$5,707
- » Land Improvements: \$2,097
- » Vehicles: \$6,075
- » Accumulated Depreciation: -\$36,375
- » In-kind Donations: \$37,620

Total Fixed Assets \$68,827

Total Assets \$137,327

EFFICIENCY EXPENSE RATIO Program vs. Admin/Outreach in 2011*

Total Program Expenses:
\$108,134

Total Admin/Outreach Expenses:
\$47,390

Total Annual Expenses:
\$155,524

% of Total 2011 Expenses
Devoted to Programs:

70%

* Latest year available. A certified public accountant calculates this number mid-year while preparing our 990 tax return.

HOW MUCH DID WE SPEND IN 2012?

- » Animal Equipment: \$10,504
- » Animal Vet Care: \$9,907
- » Animal Food: \$5,496
- » Land Lease: \$24,000
- » Repairs & Maintenance: \$7,946
- » Utilities: \$7,800
- » Insurance: \$5,954
- » Farming & Gardening: \$5,746
- » Printing & Postage: \$3,465
- » Fuel: \$2,640

Sanctuary One at Double Oak Farm

13195 Upper Applegate Road, Jacksonville, OR 97530

www.SanctuaryOne.org

541.899.8627

We never sell, share, or exchange our donors' names with any other organization. We send our supporters one annual report and one year-end letter, and we distribute a bi-monthly e-newsletter if someone signs up for it on our website.